

MONTHLY MEMBERSHIP PROGRESS REPORT

LOCATION ZIMBABWE

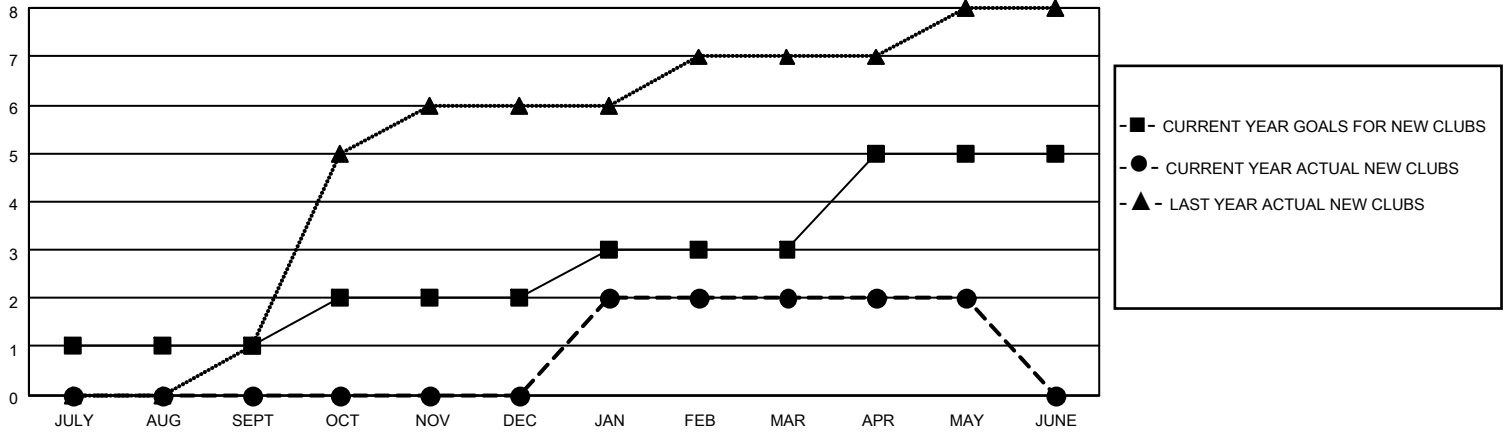
District 412 A

Results as of: 5/31/2023

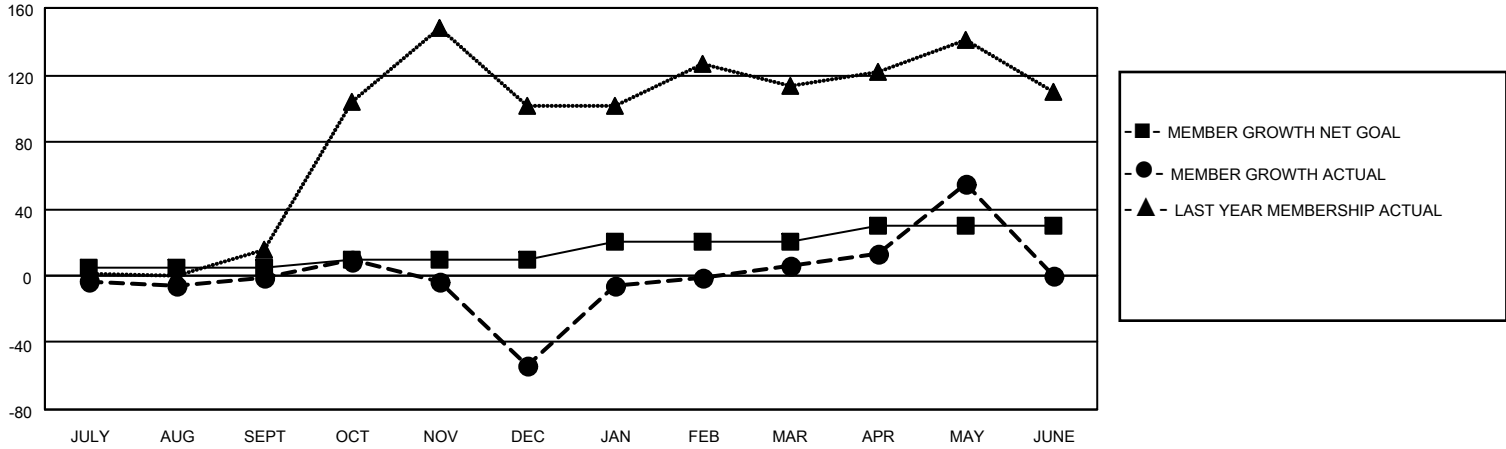
Clubs			
RESULTS FOR 2022-2023			
QUARTER	NEW CLUB GOAL	NEW CLUBS	DROPPED CLUBS
JULY/AUG/SEPT	1	0	0
OCT/NOV/DEC	1	0	0
JAN/FEB/MAR	1	2	0
APR/MAY/JUNE	2	0	0

Members			
RESULTS FOR 2022-2023			
QUARTER	MEMBER GROWTH NET GOAL	MEMBER GROWTH ACTUAL	DROPPED MEMBERS ACTUAL (including transfers)
JULY/AUG/SEPT	5	22	17
OCT/NOV/DEC	5	17	69
JAN/FEB/MAR	10	78	12
APR/MAY/JUNE	10	63	13

GOALS AND ACTUAL NEW CLUBS CUMULATIVE



GOALS AND ACTUAL MEMBERS CUMULATIVE



DROPPED CLUBS: 0	
DROPPED MEMBERS	
DECEASED	8
CLUB CANCELLED	0
OTHER	104
TOTAL	112

33 CLUBS OF 59 ADDED 1 OR MORE NEW MEMBERS

[CLICK HERE FOR CUMULATIVE MEMBERSHIP DATA](#)

<u>GENDER DISTRIBUTION</u>	
MALE	522 (45.99%)
FEMALE	613 (54.01%)
NON BINARY	0 (0.00%)
PREFER NOT TO ANSWER	0 (0.00%)
<hr/>	
TOTAL FAMILY UNIT MEMBERS	348
<hr/>	
FAMILY MEMBERS PAYING HALF DUES	204